

Eaton 5E

650/850/1100/1500/2000



Important safety instruction - Read before installing product



Personal safety

- ▶ The UPS has its own internal power source (the battery). Consequently, the power outlets may be energised even if the UPS is disconnected from the AC-power source.
- ▶ Dangerous voltage levels are present within the UPS. It should be opened exclusively by qualified service personnel.
- ▶ The UPS must be properly earthed. Measurements are required to ensure that the total leakage current of the UPS and the protected equipment does not exceed 3.5mA by checking their characteristics.
- ▶ The battery supplied with the UPS contains small amounts of toxic materials. To avoid accidents, the directives listed below must be observed: Never burn the battery (risk of explosion).
- ▶ Do not attempt to open the battery (the electrolyte is dangerous for the eyes and skin).
- ▶ Comply with all applicable regulations for the disposal of the battery.
- ▶ Batteries constitute a danger (electrical shock, burns). The short-circuit current may be very high. Precautions must be taken for all handling: remove watches, rings, bracelets and any other metal objects, use tools with insulated handles.

Product safety

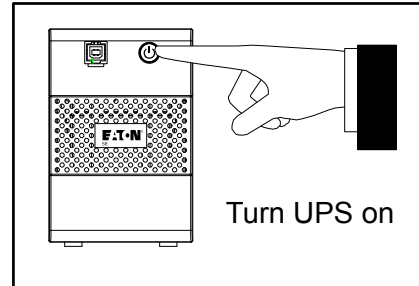
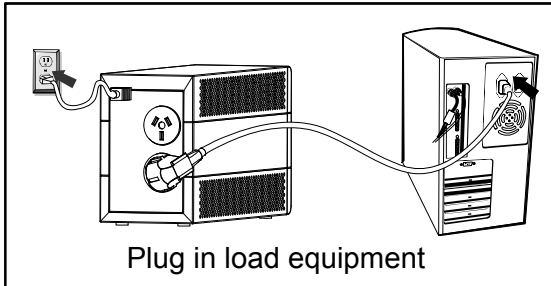
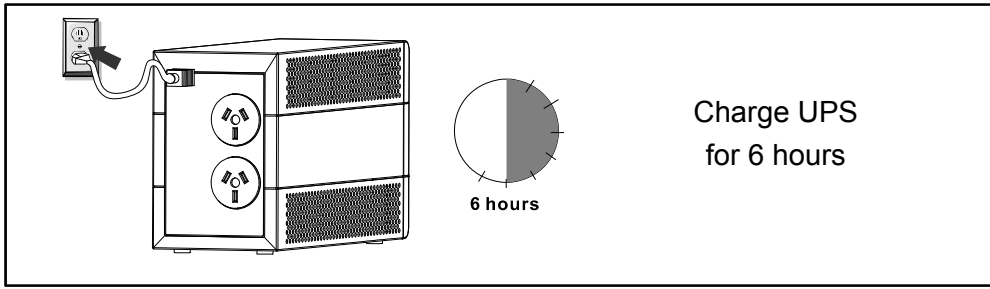
- ▶ The UPS connection instructions and operation described in the manual must be followed in the indicated order.
- ▶ UPS must be connected to a nearby wall outlet that is easily accessible. The UPS can be disconnected from the AC-power source by removing the power cord.
- ▶ Check that the indications on the rating plate correspond to your AC-power system and to the actual electrical consumption of all the equipment to be connected to the UPS.
- ▶ Never install the UPS near liquids or in an excessively damp environment
- ▶ Never let a foreign body penetrate inside the UPS.
- ▶ Never block the ventilation grates of the UPS.
- ▶ Never expose the UPS to direct sunlight or source of heat.
- ▶ If the UPS must be stored prior to installation, storage must be in a dry place.
- ▶ The admissible storage temperature range is -10°C to $+40^{\circ}\text{C}$.

Special precautions

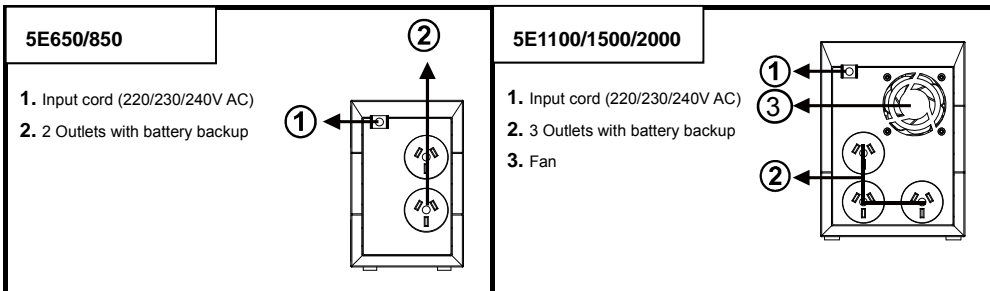
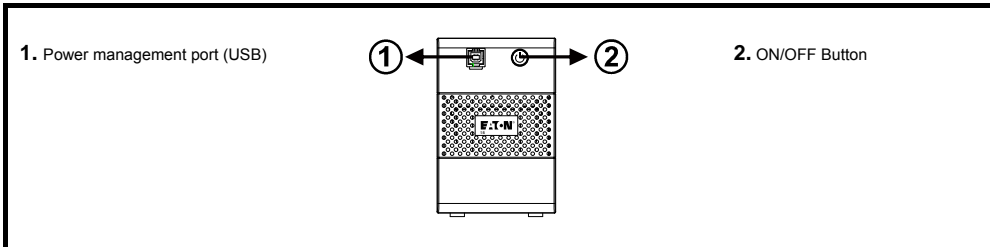
- ▶ Once installed and connected to the AC power source for the first time, the battery will start to charge. Full charging to obtain the rated battery backup time requires at least 8 hours.
- ▶ Before and after the installation, if the UPS remains de-energised for a long period, the UPS must be energised for a period of 24 hours, at least once every 6 months (for a normal storage temperature less than 25°C). This charges the battery, thus avoiding possible irreversible damage.
- ▶ During the replacement of the battery module, it is imperative to use the same type and number of element previously mounted in the UPS, in order to maintain an identical level of performance and safety. In case of doubt, don't hesitate to contact our after sales department (for more information, refer to the web site <http://powerquality.eaton.com/australia>).



QUICKSTART



SYSTEM DESCRIPTION



TROUBLE SHOOTING

Symptom	Possible Cause	Remedy
No LED display on the front panel.	1. Battery weak.	1. Charge battery up to 8 hours.
	2. Battery defect.	2. Replace with the same type of battery.
	3. Power switch is not pressed.	3. Press the power switch again.
Alarm buzzer beeps continuously when AC supply is normal.	Overload of the UPS.	Verify that the load matches the UPS capability specified in the spec.
When mains power fails, back-up time is shortened.	1. Overload of the UPS.	1. Remove some non-critical load.
	2. Battery voltage is too low.	2. Charge battery for 8 hours or more.
	3. Battery is defective or aging	3. Replace with the same type of battery.
Mains normal but LED is flashing.	Input power cord is loose.	Reconnect the power cord properly.

SPECIFICATIONS

MODEL		5E650iUSB-AU	5E850iUSB-AU	5E1100iUSB-AU	5E1500iUSB-AU	5E2000iUSB-AU
CAPACITY	V/A/W	650VA/ 360W	850VA/ 480W	1100VA/ 660W	1500VA/ 900W	2000VA/ 1200W
INPUT	Input voltage range	170V-280V				
OUTPUT	Output on battery	230V				
	Voltage Regulation (Bat. Mode)	+/-10%				
	Frequency	50Hz or 60Hz				
	Frequency Regulation (Bat. Mode)	+/-1 Hz				
	Output Waveform	Modified Sine wave				
BATTERY	Battery Type	(1)12V 7Ah	(1)12V 9Ah	(2)12V 7Ah	(2)12V 9Ah	(2)12V 9Ah
	Recharge Time	6 hours to 90% after complete discharge				
GREEN POWER FUNCTION		Yes (UPS powers off under light load and no mains power condition)		No		
COMMUNICATION	USB	Yes				
TRANSFER TIME	Typical	2-6ms typical, 10ms max.		4-8ms typical, 10ms max.		
INDICATOR	AC Mode	Green LED lighting				
	Battery Mode	Green LED Flashing				
AUDIBLE ALARM	Backup Mode	Sounding every 10 seconds				
	Low Battery	Sounding every 1second				
	Overload	Sounding every 0.5 second				
	Battery replace	Sounding every 2 seconds				
	Fault	Continuously sounding				
PROTECTION	Full Protection	Discharge, overcharge, and overload protection				
PHYSICAL	Dimensions H*W*D	148*100*288		180*133*330		
WEIGHT	Net Weight	4.6kg	5.1kg	9.3kg	10.5kg	10.5kg
ENVIRONMENT	Operating Environment	0°C - 40°C				
	Altitude	Maximum operating altitude must not exceed 2000m				
	Noise Level	Less than 45dB				
BACK UP TIME	For a 100W load	16min	20min	30min	40min	45min
WARRANTY		12 months				

Contact: Eaton Power Quality, 10 Kent Road, Mascot NSW, 2020, Australia. <http://powerquality.eaton.com/australia>